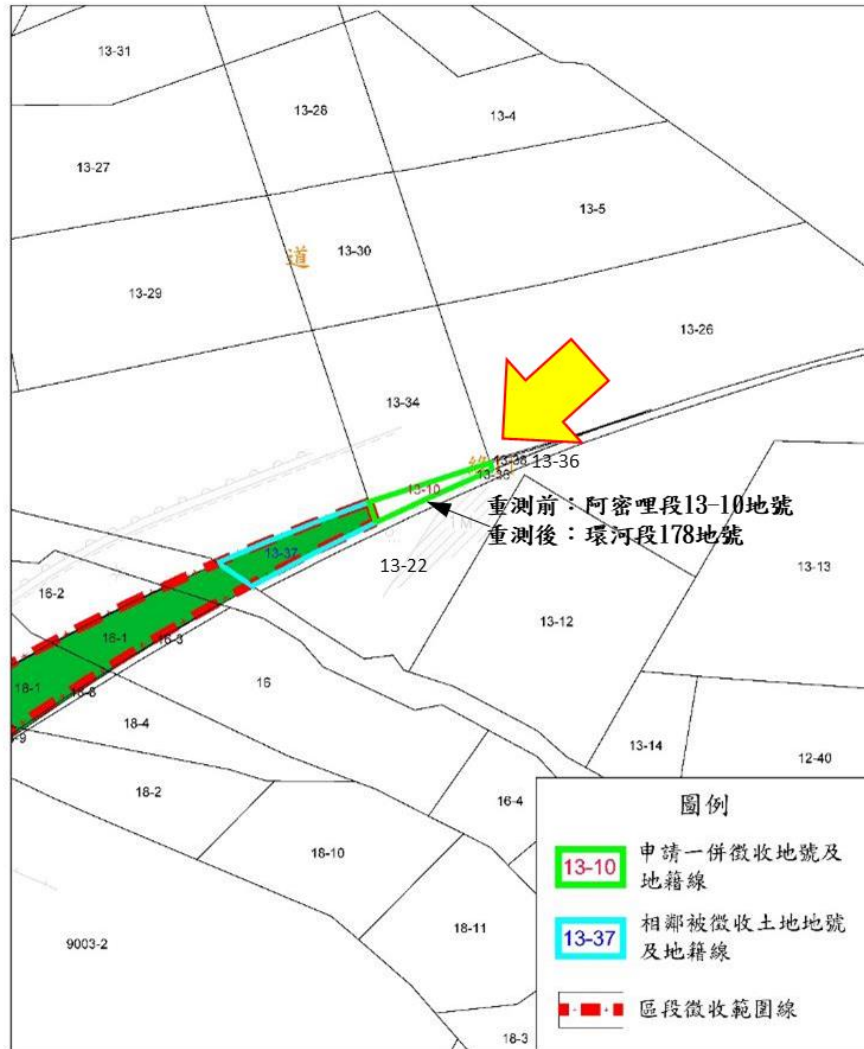
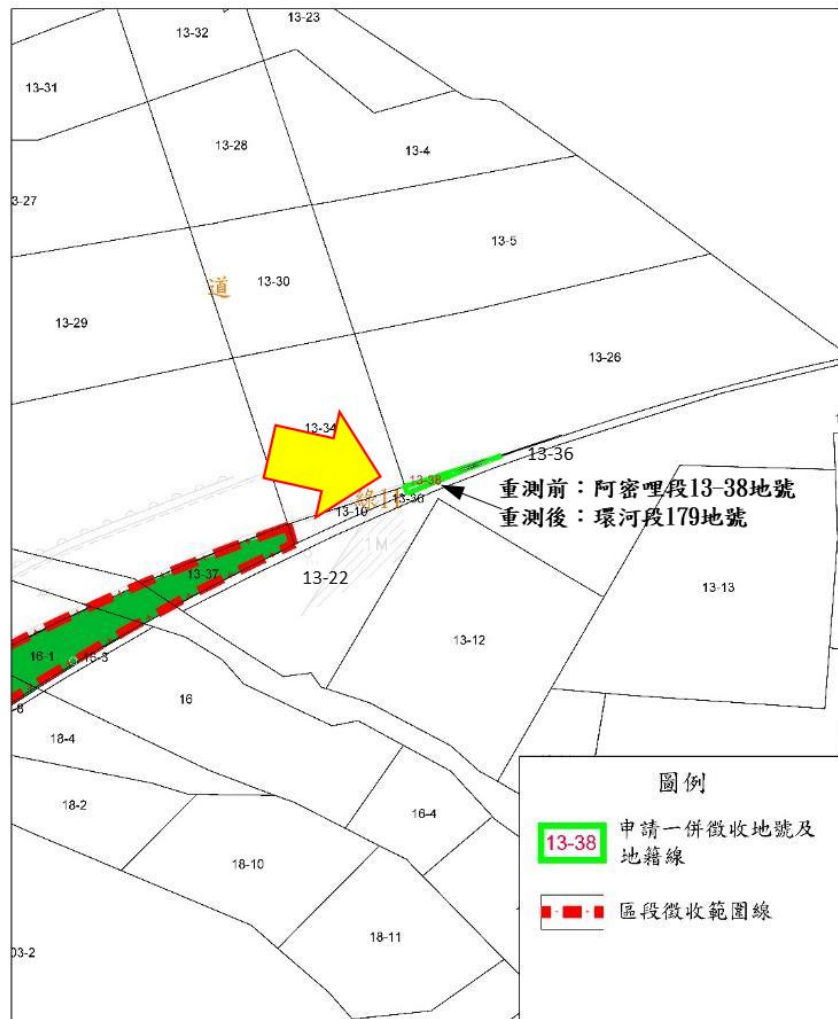


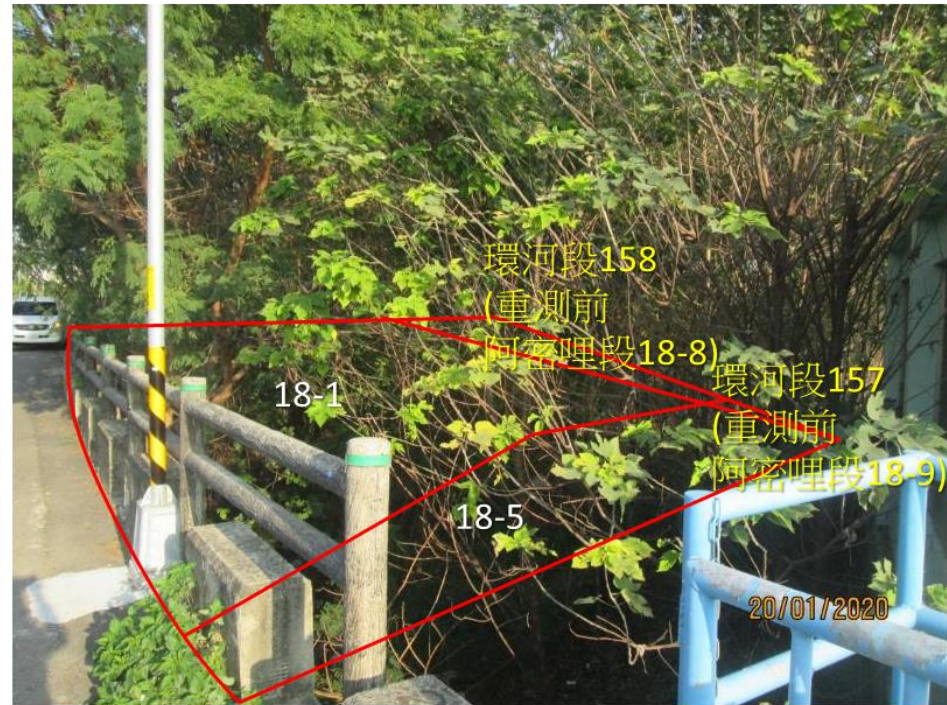
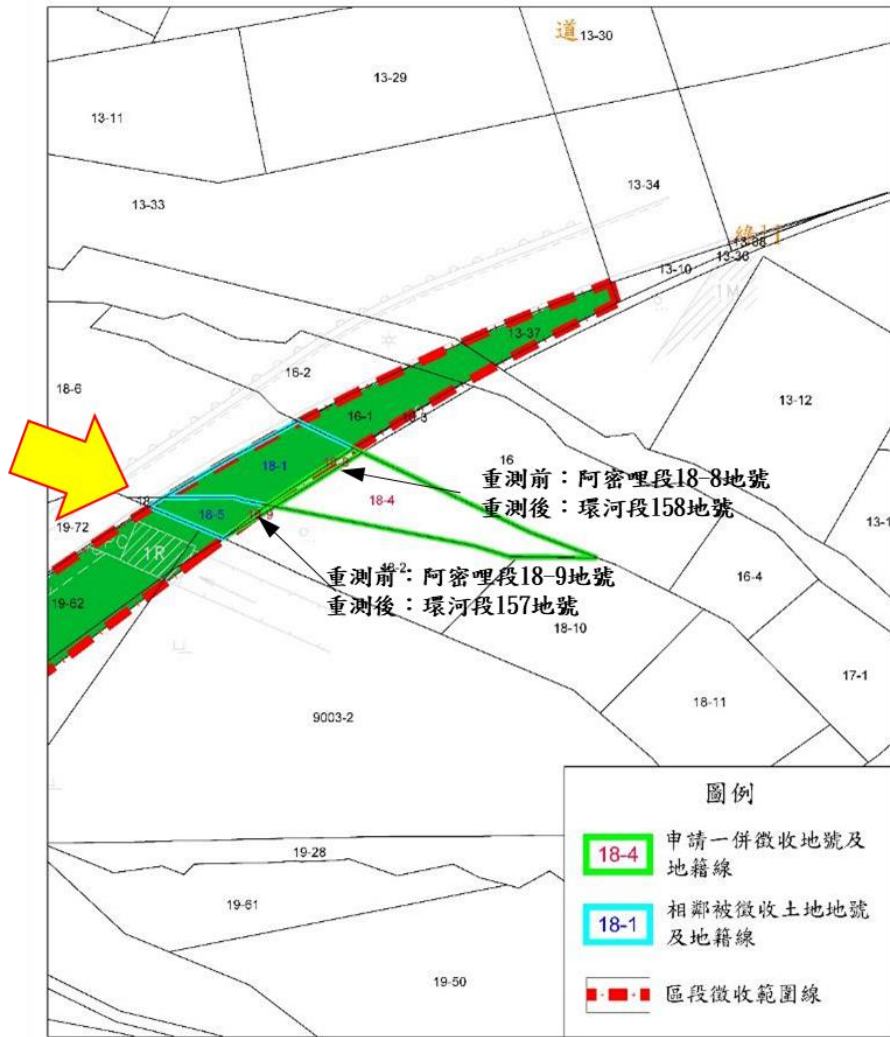
1. 阿密哩段 13-10 地號(重測後為環河段 178 地號)地籍圖及現況照片



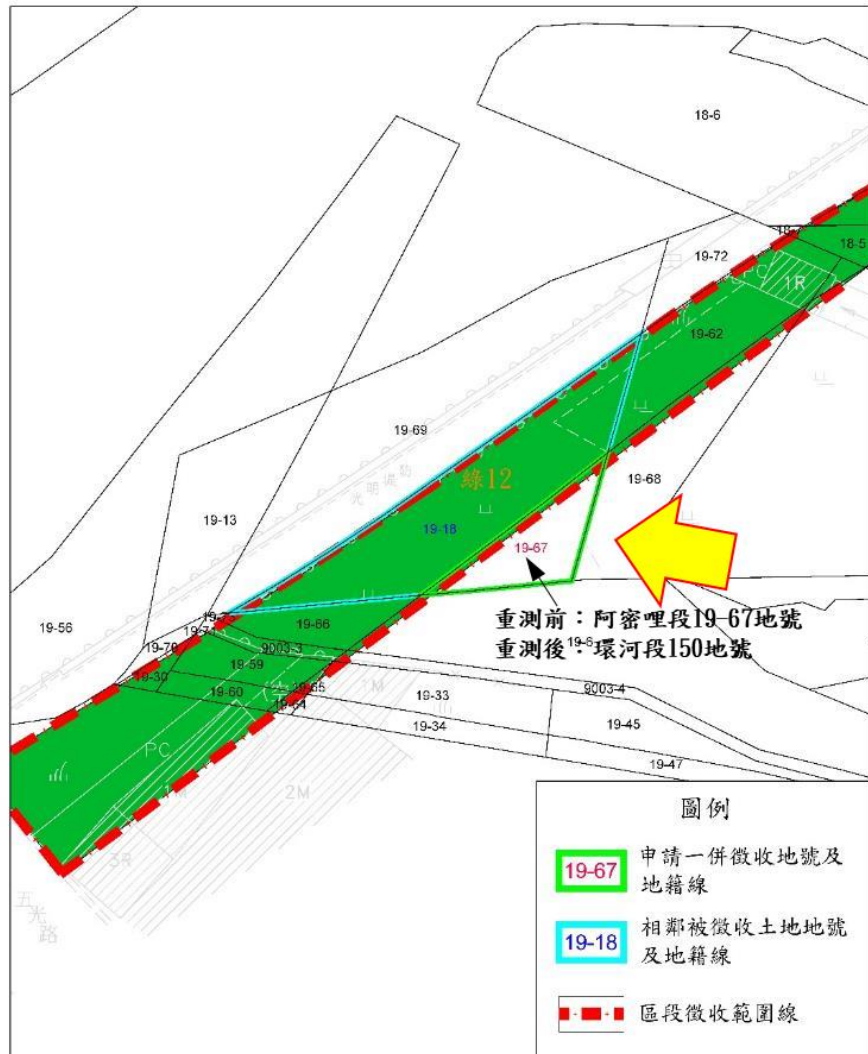
2. 阿密哩段 13-38 地號(重測後為環河段 179 地號)地籍圖及現況照片



3. 阿密哩段 18-8 地號(重測後為環河段 158 地號)地籍圖及現況照片



4. 阿密哩段 19-67 地號(重測後為環河段 150 地號)地籍圖及現況照片



5.頭前厝段 16-6 地號地籍圖及現況照片

